

Curriculum
Materials

Professional
Development

Materials
Support

Assessment

Community/
Administrative
Involvement

ASSET Inc. (*Achieving Student Success through Excellence in Teaching*)

ASSET is an *independent nonprofit* education reform initiative dedicated to **continuously improving teaching and learning through science education**

ASSET is part of a national network of over 700 projects implementing exemplary science education programs in partnership with the National Science Resources Center



© ASSET Inc. 2008



Curriculum
Materials

Professional
Development

Materials
Support

Assessment

Community/
Administrative
Involvement

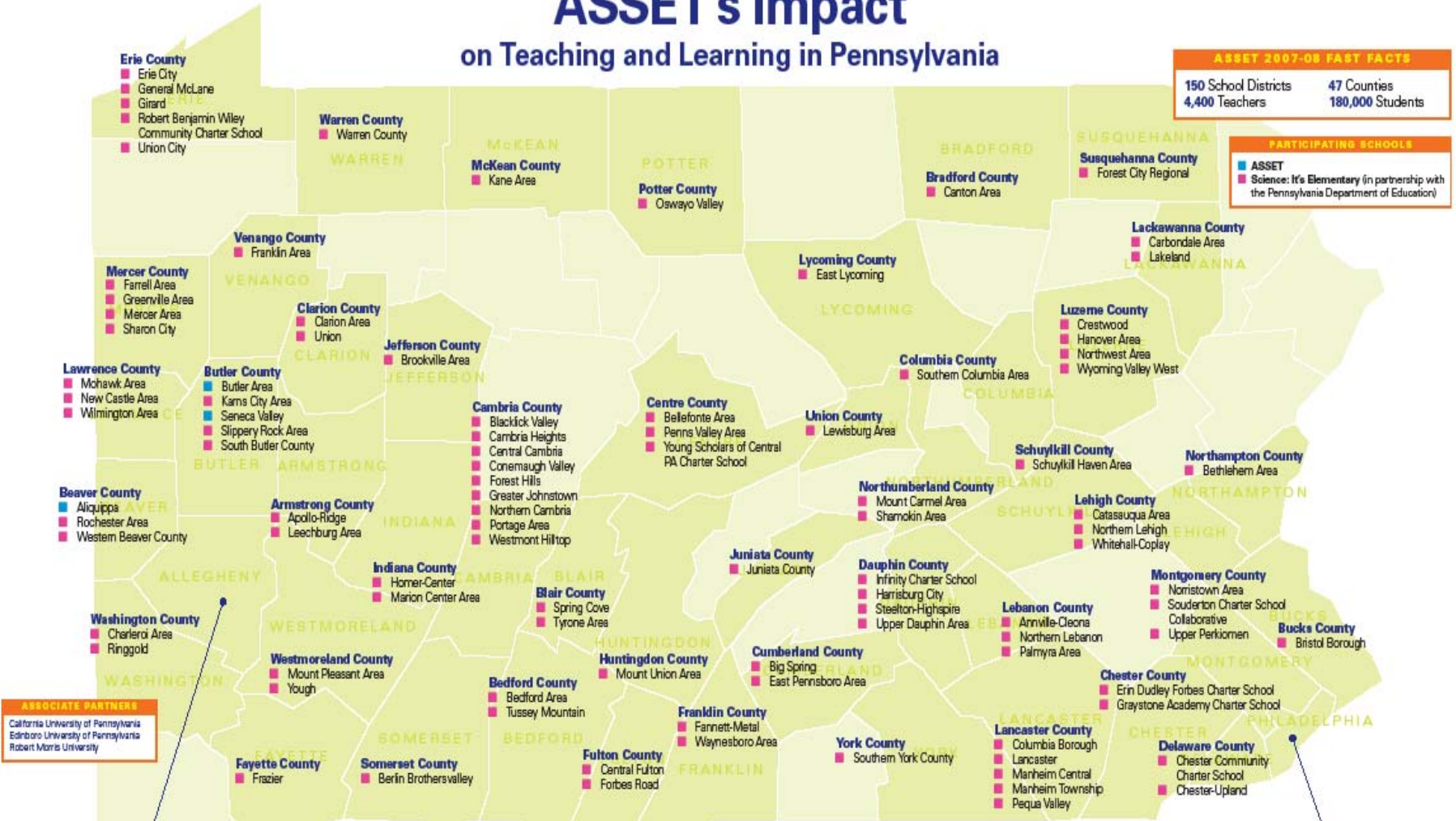
ASSET Inc. *(Achieving Student Success through Excellence in Teaching)*

Science: It's Elementary



- Governor Rendell launched initiative to improve elementary science education statewide
- \$10MM 2006-07; \$13.5MM 2007-08
- In partnership with PDE, ASSET provides hands-on science materials and ongoing, rigorous professional development

ASSET's Impact on Teaching and Learning in Pennsylvania



ASSOCIATE PARTNERS

- California University of Pennsylvania
- Edinboro University of Pennsylvania
- Robert Morris University

- Allegheny County**
- Aquinas Academy of Pittsburgh
 - Avonworth
 - Baldwin-Whitehall
 - Bethel Park
 - Brentwood Borough
 - Carlynton
 - Chartiers Valley
 - Clairton City
 - Cornell
 - Duquesne City
 - Elizabeth Forward

- Fox Chapel Area
- Gateway
- Hampton Township
- Holy Family Learning Center
- Keystone Oaks
- McKeesport Area
- Montour
- Mt. Lebanon Montessori
- Mt. Lebanon
- North Hills
- Northgate

- Northside Urban Pathways Charter School
- Penn Hills
- Pine-Richland
- Propel Schools
- Providence Heights
- Alpha School
- Quaker Valley
- Riverview
- Shaler Area
- South Allegheny
- South Fayette Township

- South Park
- Sto-Rox
- Upper St. Clair
- Urban League of Pittsburgh Charter School
- West Allegheny
- West Jefferson Hills
- West Mifflin
- Wilkinsburg
- Woodland Hills



Achieving Student Success through Excellence in Teaching

www.assetinc.org

- Philadelphia County**
- Alliance for Progress Charter School
 - Folk Arts-Cultural Treasures Charter School
 - Leadership Learning Partners Charter School
 - Mathematics, Science & Technology Community Charter School
 - Overbrook Elementary School
 - People for People Charter School
 - Philadelphia City
 - West Oak Lane Charter School
 - West Philadelphia Achievement Charter Elementary School

Curriculum
Materials

Professional
Development

Materials
Support

Assessment

Community/
Administrative
Involvement

ASSET Inc. *(Achieving Student Success through Excellence in Teaching)*

Hands-on Curriculum Materials



- Align with national and state standards
- Science strands: **earth, life, physical and technology**
- Contain materials/equipment for 30 students to conduct inquiry-based investigations on a 9-12 week science unit

Curriculum
Materials

Professional
Development

Materials
Support

Assessment

Community/
Administrative
Involvement

ASSET Inc. *(Achieving Student Success through Excellence in Teaching)*

Professional Development

ASSET

- **Courses:** choose 70+ module and strategies
- **Institutes:** Assessment, Inquiry, Literacy, Math, National Board Certification
- **ASSET Resource Teacher Services:** coaching, demo lessons, study groups, think tanks

Science: It's Elementary

- **Courses:** incorporating best of 12+ years experience
 - 2-3 day Module Foundation
 - 2-day Module Enrichment

ASSET Annual R&D

- **Math**
- **Literacy**
- **Curriculum Alignment Planning**

Curriculum
Materials

Professional
Development

Materials
Support

Assessment

Community/
Administrative
Involvement

ASSET Inc. *(Achieving Student Success through Excellence in Teaching)*

Student Achievement Results



Year One:

- In 4 of 6 comparisons, **students scored 16-44% higher***
- **Students whose teachers participated in all 3 days of Professional Development scored significantly higher (5%)***

Mid-Year Two:

- **Student growth was greater the second time teachers implemented the modules****

**SIE Student Achievement Study Summary of Results and Year One Report, Horizon Research Inc. June 2007*

***Examining the Impact of SIE on Student Achievement Analysis of Fall 2007 Data, Horizon Research Inc., May 2008*

Curriculum
Materials

Professional
Development

Materials
Support

Assessment

Community/
Administrative
Involvement

ASSET Inc. *(Achieving Student Success through Excellence in Teaching)*

Foundational STEM Skills

Scientific Reasoning Skills	Workforce Skills
Interpreting, Inferring	Reading for Understanding Locating Information
Measuring, Estimating, Computing	Applied Mathematics
Communicating, Questioning	Listening
Communicating, Questioning, Interpreting, Inferring	Writing
Communicating, Planning, Conducting Investigations Collaboratively	Teamwork
Hypothesizing, Interpreting, Inferring	Applied Technology
Observing, Predicting	Observation